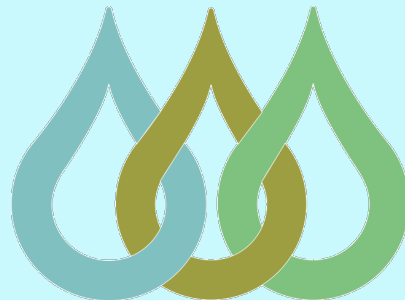


2024

SEASON REPORT

CCF TRAIL STEWARDSHIP



COTTONWOOD
CANYONS
FOUNDATION

SEASON TOTALS

	2023	2024
Crew Size	10 members	10 members
Volunteers	211 individuals	333 individuals
Volunteer Hours	1042 hours	1774 hours
Projects	7 sites	10 sites
Scouted Trails	20 trails	42 trails
Scouted Mileage	45 miles	94 miles
Trail Log Out	59 trees	185 trees
Corridor Improved	---	5.6 miles
Area Naturalized	930 ft ²	25,289 ft ²
Drains Improved	231	160
New Drains Built	---	35
New Tread Built	860 feet	4100 feet
Stream Crossings Built	3	5
Retaining Walls Built	86	26
Number of Staircases Built	26	9
Total Number of Steps	239	84
Total Amount of Rock Set*	310 tons	335 tons
	620,000lbs	670,000lbs

*based on an average quartzite and granite density of 150lbs/ft³



COTTONWOOD
CANYONS
FOUNDATION



The CCF Trail Crew building the Mt. Aire turnpike in Fall 2024. Photo credit: Emily Salle.

TABLE OF CONTENTS

1. **Our Crew**
2. **Our Partners and Sponsors**
3. **Projects Overview**
4. **Climbing Access Projects**
5. **Trail Projects**
6. **Trail Maintenance by Canyon**
7. **Other Events and Participations**
8. **Reflections**



COTTONWOOD
CANYONS
FOUNDATION

OUR CREW

Crew Lead: Grace Goodwin-Boyd

Grace came to CCF with years of experience leading crews in the high peaks of Colorado. Her technical knowledge and ability to work hard in all circumstances gave her the skills needed to lead and mentor the crew for the advanced masonry assignments of the 2024 season.



Photo credit: Emily Salle



Photo credit: Emily Salle

Assistant Crew Lead: David Wyllie

David returned to CCF for a second year as the ACL. His personal relationships with the crew from last year, as well as years of guiding experience, equipped him with the skills necessary to focus on crew well-being, safety, and efficiency this season.



COTTONWOOD
CANYONS
FOUNDATION

OUR CREW

Crew members: Mike Roberts, Alex Bennett, Derek Toroongian, Georgia Drew, Cole Dugdale, Isaac Hodson, Kyle Pilcher, Ryan Nordgran, Mark Draper, Colin Ferry



CCF Trail Crew at Storm Mountain. From left in back: Mike Roberts, Kyle Pilcher, Grace Goodwin-Boyd, David Wyllie, Derek Toorongian, Isaac Hodson, Georgia Drew. In front: Alex Bennett, Cole Dugdale, Ryan Nordgran.

Back for their sophomore year, the crew was able to develop and expand their skills in the 2024 season. CCF was thrilled to have this crew return and wants to thoroughly acknowledge that everything in this report is a result of their hard work and efforts. It wasn't easy, and they deserve all the credit.



OUR PARTNERS AND SPONSORS

Trails and projects in the report list primary funders and partners. Most trails and projects have multiple supporters.

Alta Ski Area

Alta Environmental Center

American Trails Foundation: Legacy Trails Program

Brighton Resort

Central Wasatch Commission

Cirque Series

National Forest Foundation

Petzl Foundation

REI Co-Op

Snowbird Resort

Solitude Mountain Resort

Salt Lake County

Salt Lake Climbers Alliance

Snowbird Play Forever

Town of Brighton

TrailsUtah

Utah Division of Outdoor Recreation

US Forest Service — Salt Lake Ranger District (SLRD)

Wasatch Front 100 Mile Endurance Run

Wasatch Mountain Club

Wasatch Trail Run Series

Adopt-A-Trail Sponsors

Visit Salt Lake

Alpha Coffee

Big Cottonwood Community Association

Backcountry.com

Hilton Salt Lake City Center

Sam's Club

Snowpine Lodge

Snowbird Play Forever



COTTONWOOD
CANYONS
FOUNDATION

PROJECTS OVERVIEW

CLIMBING ACCESS PROJECTS

Reservoir Ridge at Storm Mountain: Big Cottonwood Climbing Access Project

In partnership with the Salt Lake Ranger District and the Salt Lake Climbers Alliance

Supported by the TRCC program through Salt Lake County

East Gate Buttress

In partnership with the Salt Lake Climbers Alliance, supported by the Utah Division of Outdoor Recreation

TRAIL REROUTE PROJECTS

Lake Desolation

In partnership with the Salt Lake Ranger District, supported by American Trails' Legacy Trails Program

Pipeline Trail at Alexander Basin

In partnership with the Salt Lake Ranger District, supported by American Trails' Legacy Trails Program

DRAINAGE AND STREAM PROTECTION

Upper Albion Meadows Trail Drains

In partnership with Alta Ski Area, supported by the Utah Division of Outdoor Recreation

Farmington Creek Trail Stream Crossings

In partnership with the Salt Lake Ranger District, supported by the Utah Division of Outdoor Recreation

Mt. Aire Turnpike

In partnership with the Salt Lake Ranger District, supported by American Trails' Legacy Trails Program

HEAVY MAINTENANCE

Neff's Canyon Trail

In partnership with the Salt Lake Ranger District, supported by the Utah Division of Outdoor Recreation

Lamb's Canyon Trail from Millcreek

In partnership with the Salt Lake Ranger District

Supported by the Utah Division of Outdoor Recreation

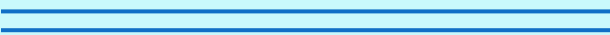


COTTONWOOD
CANYONS
FOUNDATION

PROJECTS OVERVIEW



Project locations within the Tri-Canyons area of the Salt Lake Ranger District. Farmington Creek Trail not pictured. Map source: gaia.gps



CLIMBING ACCESS PROJECTS

Reservoir Ridge at Storm Mountain

Big Cottonwood Climbing Access Project (BCCA)

Salt Lake County and USFS Salt Lake Ranger District (SLRD)

This project marked the final phase of the BCCA. CCF improved several climbing crags in Big Cottonwood Canyon to reduce erosion and provide sustainable access through partnership with the SLRD and support from the Salt Lake County's Tourism, Recreation, Cultural, and Convention program (TRCC). Previous crags improved by CCF in earlier phases of the BCCA include Challenge Buttress and The Pile.



Partial view of the finished product after 11 weeks of work. Photo credit: Emily Salle

ACKNOWLEDGMENTS:

To Lindsay Anderson (SLRD) for project guidance and support; Rocky Mountain Power for providing site access; Rockscapes Utah for working with us to source and transport quartzite; the Utah DNR North Trail Crew for helping to move tons of rock; and all our volunteers who came out to lend a hand.



COTTONWOOD
CANYONS
FOUNDATION

CLIMBING ACCESS PROJECTS

Reservoir Ridge at Storm Mountain (continued)



Before (above left) and after (right) of the site. Photo credit: Emily Salle

METRICS

8 retaining walls

24 steps

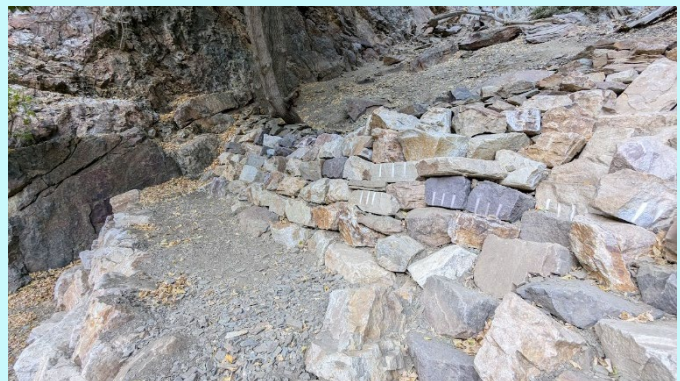
170ft² belay pad

100' of new tread

67' drainage structure

1900ft³ of rock structures

142 tons of hand-set quartzite



COTTONWOOD
CANYONS
FOUNDATION

CLIMBING ACCESS PROJECTS

East Gate Buttress: Little Cottonwood Canyon

In partnership with the Salt Lake Climbers Alliance (SLCA)



Examples of finished structures and sections.
Photo credits: Emily Salle and Grace Goodwin-Boyd

This project focused on reestablishing access from lower Gate Buttress to the East Gate routes after a rockslide in 2023 demolished the previously established trail.



CLIMBING ACCESS PROJECTS

East Gate Butte: Before and after

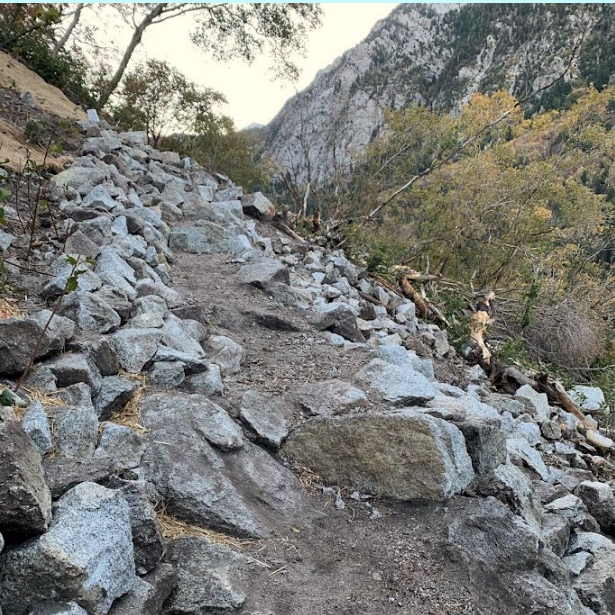


Photo credits: Grace Goodwin-Boyd



CLIMBING ACCESS PROJECTS

East Gate Buttress: Metrics



Before (above) and after (right). Photo credits: Grace Goodwin-Boyd

METRICS

6000ft² of native seed revegetation using biodegradable erosion control matting

1500 ft³ of structural rock

112 tons of set native granite*

*based on an average granite density of 150lbs/ ft³

50 steps

6 staircases

8 check steps

8 retaining walls

210 feet of new trail

Thank you to all the SLCA volunteers who came out to help with this project!



COTTONWOOD
CANYONS
FOUNDATION

TRAIL PROJECTS

TRAIL REROUTES

Lake Desolation

In partnership with the Salt Lake Ranger District, supported by American Trails' Legacy Trails Program

Pipeline Trail at Alexander Basin

In partnership with the Salt Lake Ranger District, supported by American Trails' Legacy Trails Program

DRAINAGE AND STREAM PROTECTION

Upper Albion Meadows Trail Drains

In partnership with Alta Ski Area, supported by the Utah Division of Outdoor Recreation

Farmington Creek Trail Stream Crossings

In partnership with the Salt Lake Ranger District, supported by the Utah Division of Outdoor Recreation

Mt. Aire Turnpike

In partnership with the Salt Lake Ranger District, supported by American Trails' Legacy Trails Program

HEAVY MAINTENANCE

Neff's Canyon Trail

In partnership with the Salt Lake Ranger District
Supported by the Utah Division of Outdoor Recreation

Lamb's Canyon Trail from Millcreek

In partnership with the Salt Lake Ranger District
Supported by the Utah Division of Outdoor Recreation

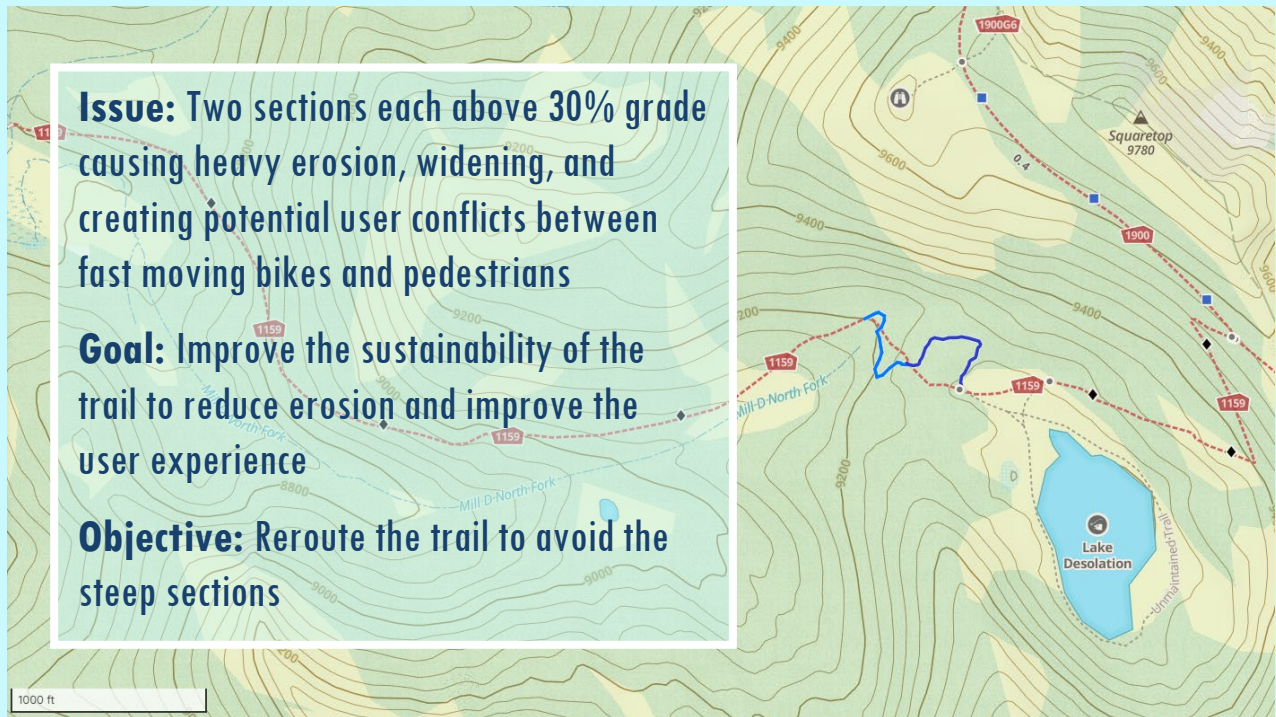


COTTONWOOD
CANYONS
FOUNDATION

TRAIL REROUTES

Lake Desolation: Big Cottonwood Canyon

In partnership with Salt Lake Ranger District Trails and Wilderness Crew
Supported by American Trails' Legacy Trails Program



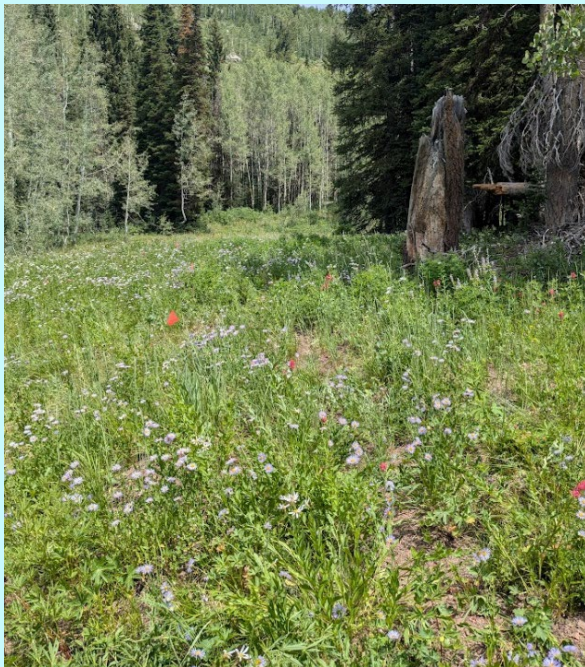
Map source: gaia.gps

The first section of the reroute (picture in light blue) was built with both the SLRD Trails and Wilderness Crew and CCF crew. It was mostly through forested terrain and included a reinforced switchback. The second section of the reroute (pictured in dark blue) was built by the CCF crew through mostly grassy terrain and included one long turn. Together both reroutes averaged less than 12% grade.



TRAIL REROUTES

Lake Desolation: Before and After



Before (left side) and after (right side). Upper photos are from the first section of reroute and lower photos are from the second.

Upper photos: Grace Goodwin-Boyd. Lower photos: Emily Salle



COTTONWOOD
CANYONS
FOUNDATION

TRAIL REROUTES

Lake Desolation: Metrics



Photo credit: Grace Goodwin-Boyd

1190ft total new tread
1590ft² closed and naturalized
2 new retaining walls
13 new drains
12 stumps removed

10 hazard trees removed
20 restoration check steps
4 illegal fire rings dispersed



COTTONWOOD
CANYONS
FOUNDATION

TRAIL REROUTES

Pipeline Trail at Alexander Basin: Millcreek Canyon

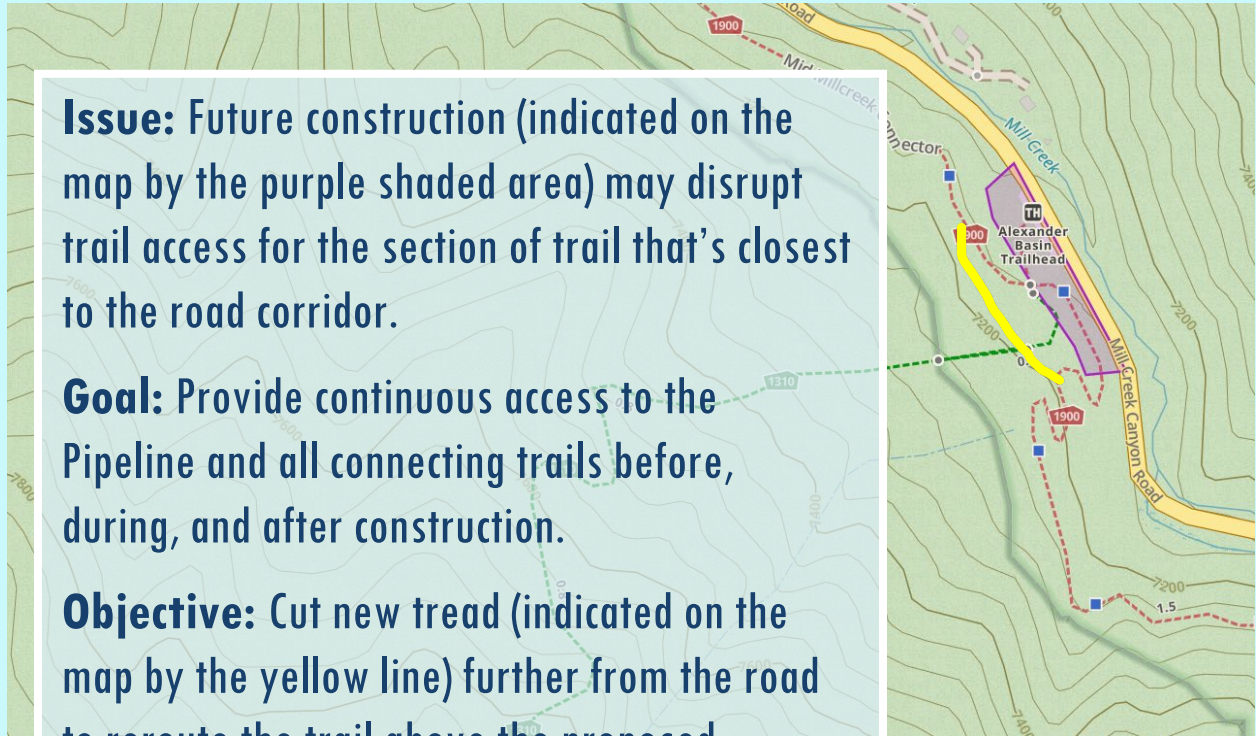
In partnership with SLRD Trails and Wilderness Crew
Supported by American Trails' Legacy Trails Program

Issue: Future construction (indicated on the map by the purple shaded area) may disrupt trail access for the section of trail that's closest to the road corridor.

Goal: Provide continuous access to the Pipeline and all connecting trails before, during, and after construction.

Objective: Cut new tread (indicated on the map by the yellow line) further from the road to reroute the trail above the proposed construction and close the lower trail segment.

Considerations: Bidirectional use by hikers, bikers, and runners. Target grade average of 8% with a tread width of 4ft to match existing Pipeline Trail.



Map source: gaia.gps



COTTONWOOD
CANYONS
FOUNDATION

TRAIL REROUTES

Pipeline Trail at Alexander Basin: Before and After

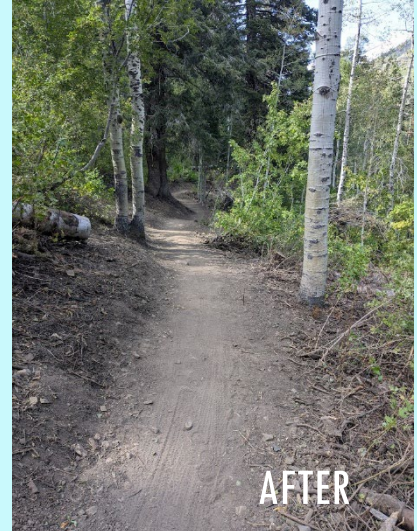
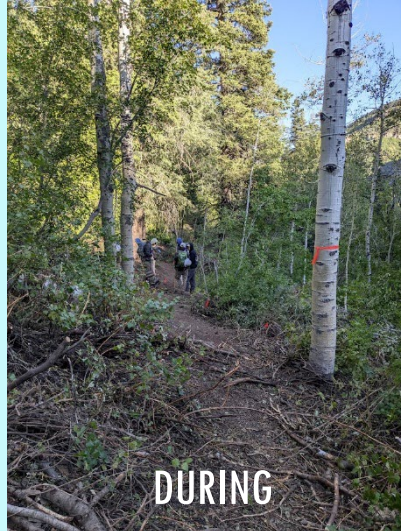


Photo credits: Emily Salle



COTTONWOOD
CANYONS
FOUNDATION

TRAIL REROUTES

Pipeline Trail at Alexander Basin: Metrics



Photo credit: Emily Salle

Total distance of new tread: 539'

New drains constructed: 10

Final average grade of new segment: 7.3%

Number of retaining walls: 4

Trees felled: 4

Stumps pulled: 8

Closed and naturalized: 2217 sq ft

Signs installed: 1



COTTONWOOD
CANYONS
FOUNDATION

TRAIL PROJECTS

DRAINAGE AND STREAM PROTECTION

Upper Albion Meadows Trail Drains

In partnership with Alta Ski Area, supported by the Utah Division of Outdoor Recreation

Farmington Creek Trail Stream Crossings

In partnership with the SLRD, supported by the Utah Division of Outdoor Recreation

Mt. Aire Turnpike

In partnership with the SLRD, supported by American Trails' Legacy Trails Program



The crew and volunteers working on draining an active spring seepage site on the Albion Meadows Trail.
Photo credit: Emily Salle



COTTONWOOD
CANYONS
FOUNDATION

DRAINAGE AND STREAM PROTECTION

Upper Albion Meadows Trail: Alta Ski Area

Supported by the Utah DOR's Recreation Restoration Initiative



GOAL:

Mitigate heavy erosion and drainage issues by installing drains and retreading portions of severely rutted non-motorized double track

METHODS:

Retread with native fill by hand and with machinery. Use manual and mechanical techniques to install drains.

DRAINS:

15 drainage features installed ranging from cobbled gutters to rock water bars.

RETREADING

0.25 miles of resurfacing raised the tread height by an average of eight inches.

Upper: Trail map showing the section of trail resurfaced and the 15 drain sites. Source: gaia.gps

Lower: In-process work on one of the rock bar drains. Photo credit: David Wyllie



COTTONWOOD
CANYONS
FOUNDATION

DRAINAGE AND STREAM PROTECTION

Upper Albion Meadows Trail: Retreading Before and After



To keep water off the newly retreaded surface, gutter drains were installed along the inside edge of the tread.

Retreading: 0.25 miles
Gutter drains: 131' and 97'

Upper photos: Retreading before and after. Lower photo: installation of a gutter drain. Photo credit: Emily Salle



DRAINAGE AND STREAM PROTECTION

Upper Albion Meadows Trail: Drains



METRICS

15 total structures
30 tons of set
granite

A special thank you to
Coleman Worthen
(Alta Ski Area) for his
assistance in this
project.



Upper photos: drains under construction.
Lower photo: finished drain.
Photo credits: Emily Salle



DRAINAGE AND STREAM PROTECTION

Farmington Creek Trail Stream Crossings

In partnership with the Salt Lake Ranger District's Trails and Wilderness Crew
Supported by the Utah Division of Outdoor Recreation's Recreation Restoration Initiative



Map showing the creek crossings on the Farmington Creek Trail (red). Map source: gaia.gps



Photo credit: David Wyllie

The goal of this project was to provide stable and defined crossing points for trail users that would prevent trail widening and unnecessary disturbance of and interaction with the streams. The crew used native rock to create retained crush pads and stepping stones.



DRAINAGE AND STREAM PROTECTION

Farmington Creek Trail: Before and after



Photo credit: David Wyllie

METRICS FOR UPPER CROSSING

- 30ft length
- 137 ft³ volume of rock
- 20ft of new tread
- 320ft of lopped corridor

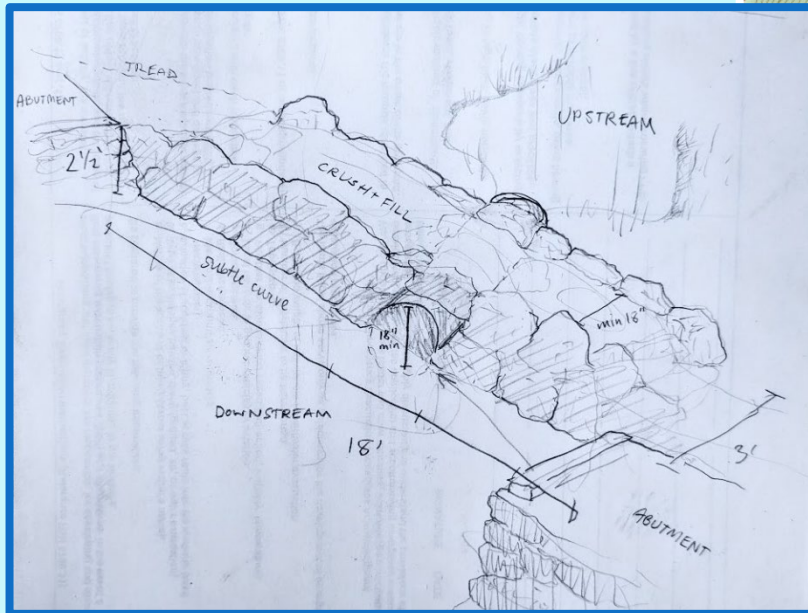


COTTONWOOD
CANYONS
FOUNDATION

DRAINAGE AND STREAM PROTECTION

Mt. Aire Turnpike: Millcreek Canyon

In partnership with the Salt Lake Ranger District
Supported by American Trails' Legacy Trails Program



Map showing turnpike location.
Map source: gaia.gps



Upper image is of the hand-drawn plans for the turnpike.
Lower image shows the missing bridge. Credit: Emily Salle

Issue: bridge washout left users crossing the muddy and often high-flow stream on foot

Goal: create a stable crossing that would allow the stream to pass through, withstand spring runoff, and keep users out of the stream bed



COTTONWOOD
CANYONS
FOUNDATION

DRAINAGE AND STREAM PROTECTION

Mt. Aire Turnpike: Progress Photos



A series of photos showing the project development from the installation of the 18in culvert, to the triple layering of stone retaining walls, to filling the tread with crush and sediment. Photo credits: Emily Salle and Grace Goodwin-Boyd.



COTTONWOOD
CANYONS
FOUNDATION

DRAINAGE AND STREAM PROTECTION

Mt. Aire Turnpike: Metrics



- Turnpike length: 23ft
- Turnpike volume: 80ft³
- 2 additional retaining walls
- 2 check steps
- 17ft of new tread and brushback
- 92ft² naturalized and closed
- 2 trees removed

Total amount of rock set: 10 tons



Upper photo credit: Grace Goodwin-Boyd. Lower photo credit: Emily Salle



COTTONWOOD
CANYONS
FOUNDATION

TRAIL PROJECTS

HEAVY MAINTENANCE

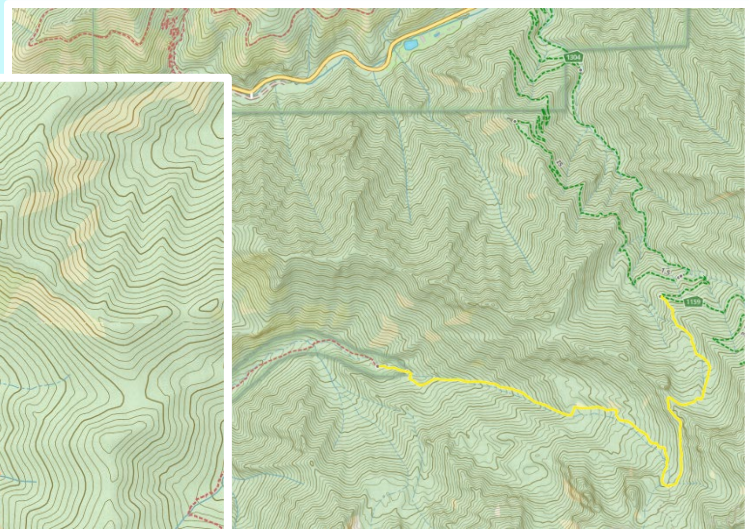
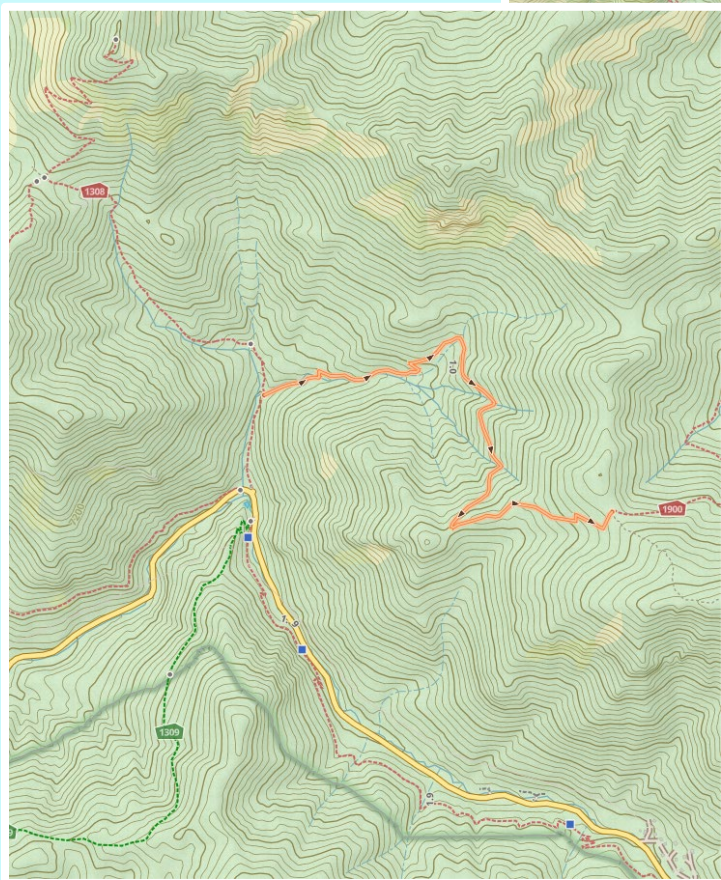
Neff's Canyon Trail: Salt Lake Ranger District

In partnership with the SLRD, supported by the Utah Division of Outdoor Recreation

Lamb's Canyon Trail from Millcreek: Salt Lake Ranger District

In partnership with the SLRD, supported by the Utah Division of Outdoor Recreation

Both projects focused on addressing issues of deferred maintenance: clearing the trail corridors and reestablishing narrowed or eroded sections of tread.



Left: Lamb's Canyon Trail from Millcreek pictured in orange. Above: Upper Neff's Canyon trail pictured in yellow.
Map source: gaia.gps



COTTONWOOD
CANYONS
FOUNDATION

HEAVY MAINTENANCE

Neff's Canyon Trail: Mt. Olympus Wilderness Area

In partnership with the Salt Lake Ranger District's Trails and Wilderness Crew
Supported by the Utah Division of Outdoor Recreation



A before and after from one of the sections of neglected trail. Photo credit: Kyle Pilcher

The CCF crew focused on clearing 2020 windstorm debris from the trail and reestablishing the trail's corridor and narrowed tread. The undertaking was especially intensive given that the trail is located within the wilderness boundary. All large debris had to be cut and removed with either hand saws or crosscut saws.



HEAVY MAINTENANCE

Neff's Canyon Trail: Metrics



Photo credits: Derek Toorongian (above), Grace Goodwin-Boyd (below)



METRICS

Trees removed: 46
Corridor brushed: 1700ft
New tread: 50ft



COTTONWOOD
CANYONS
FOUNDATION

HEAVY MAINTENANCE

Lamb's Canyon Trail from Millcreek

Supported by the American Trails' Legacy Trails Program



Volunteers lopping the corridor. Credit: Emily Salle

Issue: Deferred maintenance had led to narrowing, sloughing, and overgrowth.

Objective: Incorporate the involvement of volunteers to open the corridor and repair the most damaged sections of tread.

Volunteers: This project included the involvement of volunteers from the Wasatch Front 100 Endurance Run (WF100) and the Wasatch Trail Running Series. The trail itself forms part of the course for the WF100 race.

Total corridor brushed: 1.7 miles

Tread repaired: 80 feet

Drains cleaned: 3

Volunteer events: 5

Volunteer participants: 92 people

Volunteer hours: 416 hours

Trees logged out: 4



COTTONWOOD
CANYONS
FOUNDATION

HEAVY MAINTENANCE

Lamb's Canyon Trail from Millcreek



Photos from volunteer days on Lamb's. Credit: Emily Salle



COTTONWOOD
CANYONS
FOUNDATION

ADDITIONAL TRAILS MAINTAINED*



Bridge maintenance on the Great Western Trail.
Photo credit: David Wyllie

BIG COTTONWOOD CANYON

Bonneville Shoreline Trail at Ferguson

Broads Fork Trail

Lake Blanche Trail

Mill B North Trail

Butler Fork

Mill A Trail

Desolation Trail

Dog Lake from Mill D

Days Fork

Solitude Mountain Trails

Silver Lake

Brighton Lakes Trail

Catherine's Pass Trail

Dog Lake at Brighton/Clayton Peak Trail

*Trail maintenance includes log out, corridor brushback, drainage work, and light structural and tread repair.

MILLCREEK CANYON

Grandeur Trail

Desolation Trail from Thaynes

Thaynes Canyon

Bowman Fork Trail

Mt. Aire Trail

Alexander Basin Trail

Great Western Trail



A rebuilt drain on the Lake Blanche Trail.
Photo credit: Ryan Nordgran



COTTONWOOD
CANYONS
FOUNDATION

ADDITIONAL TRAILS MAINTAINED

LITTLE COTTONWOOD CANYON

Red Pine Lake Trail
Maybird Gulch Trail
Snake Pit Trail at Alta
Cecret Lake Trail

WASATCH FRONT AND OTHERS

Mt. Olympus Trail
Heugh's Canyon Trail
Bonneville Shoreline Trail from Mt O to Heugh's
Stansbury Crest Trail



Rebuilding check steps with the Alta Environmental Center crew on Cecret Lake Trail. Photo credit: Emily Salle



New tread on the Stansbury Crest Trail with the SLRD Trails and Wilderness Crew. Photo credit: David Wyllie

ADDITIONAL TRAILS SCOUTED

Old Red Pine Rd Trail
Pipeline Trail
Donut Falls
Alpenbock Loop
White Pine Rd
Homerun Trail
Catherine's Pass from Alta



COTTONWOOD
CANYONS
FOUNDATION

OTHER EVENTS AND PARTICIPATIONS

Cirque Series Partnership

The Cirque Series is a trail running race series that takes place at ski areas around the country. For the three events in Utah, CCF Trails partnered with the Cirque Series to give constructive feedback on how to lessen the impact of the events on the landscape by helping to choose durable surfaces for the course route, tabling and speaking at the event, and designing Leave-No-Trace materials for all runners.

Dry Stone Masonry Workshop

This was the first iteration of skill-building workshops for professional trail builders in Utah. For three days, CCF hosted a workshop focused on the skills of rock setting and dry stonework. Participants came from Logan, Ogden, the Salt Lake Valley, Heber, and Moab. Instructors included Emily Salle (CCF), Grace Goodwin-Boyd (CCF), Patrick Parsel (UDoR), Lindsay Anderson (USFS), and Zachary Strickland (Mountain Trails Foundation).



Workshop participants at Reservoir Ridge at Storm Mountain. Photo credits: Emily Salle and Patrick Parsel



COTTONWOOD
CANYONS
FOUNDATION

REFLECTIONS ON THE 2024 SEASON

We were so thrilled to welcome back everyone from the 2023 crew for the '24 season. This is an incredible group of supportive, hardworking people who are dedicated to high quality results and creating a supportive team. This season wasn't an easy load to carry, and I couldn't be prouder of their accomplishments.

At the end of last season, we asked the crew for some feedback on how they would like to see the program develop. Most of their answers mentioned interfacing more with the SLRD crew, having options for overnight hitches, and increasing the opportunities for certifications and skill-building. This season we worked on four projects directly alongside the SLRD crew. We offered two overnight hitch options. We certified four new crosscut sawyers and three new chainsaw sawyers, and our metrics show the benefit of that investment.

The CCF Trail Stewardship Program continues to strive to be the on-the-ground representation of sustainable trail maintenance here in the Wasatch. Each year we hope to gain a little more ground in improving our trail system to fit the needs of our growing population of outdoor recreators while becoming resilient to the climatological pressures of the future. I can confidently say that we made progress toward that goal this year and are poised to do the same in the year to come.

Thank you to each of the crew members for being such good company for our hard days together. Thank you to our project partners for their visions and teamwork. Thank you to our donors for making it possible. Thank you to the rest of the CCF team for creating such a great place to work. And thanks to you for taking the time to read this report.

Sincerely,



Emily Salle

CCF Trails Stewardship Director

